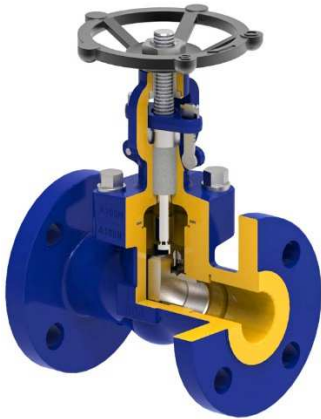


**FLANGE, WEDGE GATE VALVE zGAT**



Body material	Nominal pressure	Nominal diameter	Max. temperature
G Forged steel	P Class 150 (20bar) 3 Class 300 (50bar) 6 Class 600 (100bar)	DN 15-50	425°C
	E PN40 G PN100		



according to Pressure Directive 2014/68/EU  
CE marking for DN≥32

**FEATURES**

- high tightness (leakproofness class A according to EN - 12266 - 1)
- compact settlement
- environment friendly
- tests according to API 598 or EN 12266-1
- Installation length according to DIN 3202 for classes according to ANSI B16.10  
PN 40 - F1 for DN 15-32, F7 for DN 40 - 50  
PN 100- F2 for DN 15-25, F1 for DN 32, F7 for DN 40-50
- flange connections according to ASME B16.5 or EN 1092-1

**APPLICATION\***

\* not all of the applications are suitable for all of the material finishes

The website [www.zetkama.com.pl](http://www.zetkama.com.pl) contains a Chemical Resistance List, which specifies the operational characteristics for a certain medium.

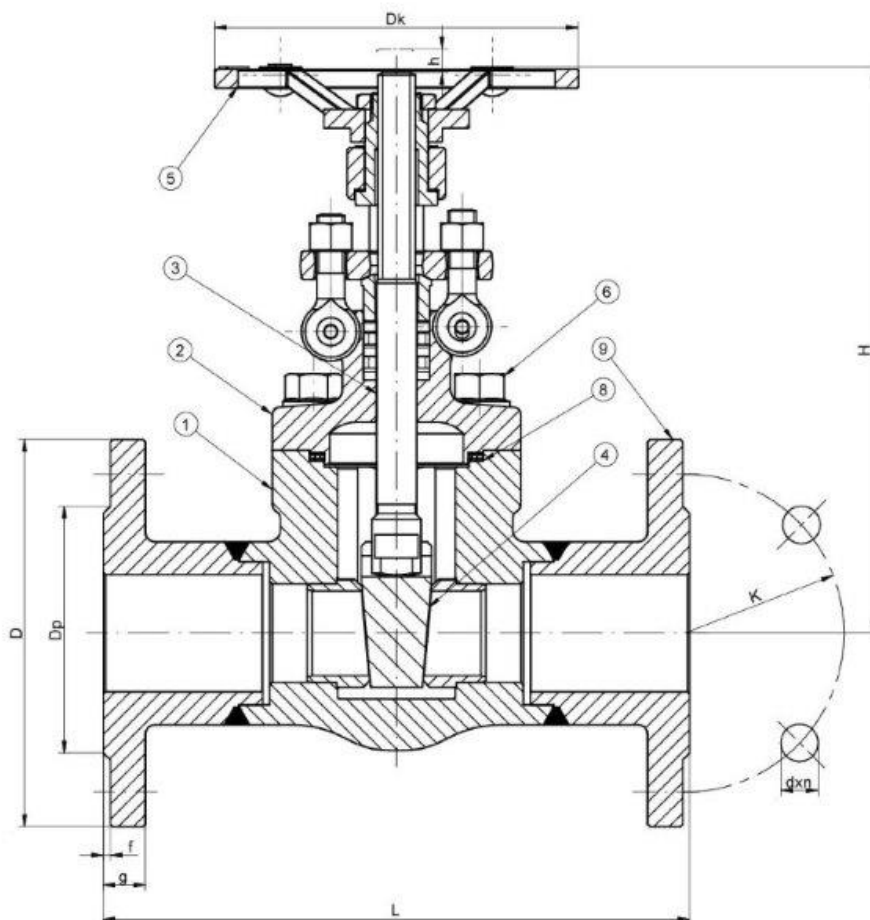
industries							
	INDUSTRY	SHIPBUILDING INDUSTRY	HEATING	PETROCHEMICAL INDUSTRY	POWER ENGINEERING	CHEMICAL INDUSTRY	
media							
	GLYCOL	INDUSTRIAL WATER	DIATHERMIC OIL	STEAM	COMPRESSED AIR	NEUTRAL MEDIA	NATURAL GAS

Subject to design changes.

Edition 01/2023

FIG. 108

MATERIALS, DIMENSIONS



	Body material	G
	Type	01
1	Body	A105N
2	Bonnet	A105N
3	Stem	A182 F6a
4	Wedge	A182 F6a
5	Hand-wheel	A197
6	Screw	A193 B7
8	Cover gasket	spiral wound gasket (steel + graphite)
9	Gland packing	Graphite
	Max. temperature	425°C

Subject to design changes.

Edition 01/2023

ZETKAMA Sp. z o.o.  
ul. 3 Maja 12  
PL 57-410 Ścinawka Średnia

tel. +48 74 8652 187  
ph. +48 74 8652 111  
Fax +48 74 8652 199

E-mail spkraj@zetkama.com.pl  
www.zetkama.pl

FIG. 108

Class150

DN	Dz	Dp	Do	d	do x R	L	f	g	H	h	Dk	Weight
mm												kg
15	89	34.9	60.3	10	16x4	108	1.6	11.1	16	10	96	3.8
20	98	42.9	69	13	16x4	117.5	1.6	12.7	169	15	96	4.2
25	108	50.8	79.4	18	16x4	127	1.6	14.3	207	22	115	6.5
40	127	73.2	98.4	29	16x4	165	1.6	17.5	249	34	145	13.5
50	152	92.1	120.6	36	20x4	178	1.6	19.5	283	43	165	20

Class300

DN	Dz	Dp	Do	d	do x R	L	f	g	H	H	Dk	Weight
Mm												kg
15	95.3	35.1	66.5	10	16x4	140	1.6	14.2	165	10	96	4
20	117.3	42.9	82.6	13	19x4	152.5	1.6	15.8	169	15	96	4.5
25	124	50.8	88.9	18	19x4	165	1.6	17.5	207	22	115	6.8
40	155.4	73.2	114.9	29	22x4	190.5	1.6	20.6	249	34	145	14
50	165	92.1	127	36	20x8	216	1.6	22.4	283	43	165	21

Class600

DN	Dz	Dp	Do	d	do x R	L	f	g	H	H	Dk	Weight
Mm												kg
15	95.3	35.1	66.5	10	16x4	140	1.6	14.2	165	10	96	4
20	117.3	42.9	82.6	13	19x4	152.5	1.6	15.8	169	15	96	4.5
25	124	50.8	88.9	18	19x4	165	1.6	17.5	207	22	115	6.8
40	155.4	73.2	114.9	29	22x4	190.5	1.6	20.6	249	34	145	14
50	165	92.1	127	36	20x8	216	1.6	22.4	283	43	165	21

PN 40

DN	Dz	Dp	Do	d	do x R	L	f	g	H	h	Dk	Weight
mm												kg
15	95	45	65	10	14x4	130	2	16	166	10	96	3.4
20	105	58	75	13	14x4	150	2	18	169	15	96	4.3
25	115	68	85	18	14x4	160	2	18	207	22	115	6.2
32	140	78	100	29	18x4	180	2	18	231	28	115	12
40	150	88	110	29	18x4	240	2	18	249	34	145	17
50	165	102	125	36	18x4	250	2	20	283	43	165	22

Subject to design changes.

Edition 01/2023

**FIG. 108**

PN 100

DN	Dz	Dp	Do	d	do x R	L	f	g	H	H	Dk	Weight
Mm												kg
15	105	45	75	10	16x4	210	2	20	166	10	96	5.4
20	130	58	90	13	19x4	230	2	22	169	15	96	6.5
25	140	68	100	18	19x4	230	2	24	207	22	115	9.1
32	155	78	110	29	22x4	180	2	24	231	28	115	13.3
40	170	88	125	29	22x4	240	2	26	249	34	145	25.3
50	195	102	143	36	26x4	250	2	28	283	43	165	31.1

**PRESSURE-TEMPERATURE CHART**

Material	Pressure	Temperature [° C]						
		-29 < up to <38	100	200	300	350	40	425
A105N	Class150 [bar]	19.6	17.9	14	10.2	8.4	6.5	5.6
	Class300 [bar]	51.1	46.4	43.8	38.7	37	34.5	29.8
	Class600 [bar]	102.1	92.8	87.6	77.5	73.9	69	57.5
	PN40	40	35.7	31.4	25.9	22.8	18	14.3
	PN100	100	89	78	65	57	45	29.8

Options:

Various configurations are possible upon a customer's request.

Subject to design changes.

Edition 01/2023

FIG. 108

TYPE

Figure	Body material	Nominal diameter	Nominal pressure	Type
108	G Forged steel A105N	15-50 mm	P Class 150	01 stem and wedge connection detachable; stem, wedge - stainless steel
			3 Class 300	01 stem and wedge connection detachable; stem, wedge - stainless steel
			6 Class 600	01 stem and wedge connection detachable; stem, wedge - stainless steel
			E PN40	01 stem and wedge connection detachable; stem, wedge - stainless steel
			G PN100	01 stem and wedge connection detachable; stem, wedge - stainless steel

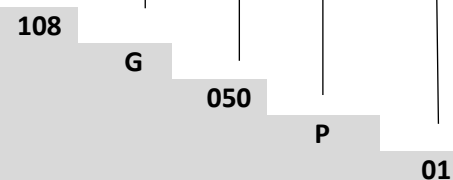
ORDER PLACEMENT

Figure	Body material	Nominal diameter	Nominal pressure	Type
108	G Forged steel A105N	15-50 mm	P Class 150	01 stem and wedge connection detachable; stem, wedge - stainless steel

An example of index-based order

108 G 050 P 01

Gate valve, ends welded, form straight  
 Forged steel A105N  
 Nominal diameter (mm)  
 Nominal pressure Class 150  
 Gate valve; stem, wedge - stainless steel



Subject to design changes.

Edition 01/2023